

Capture of professionals

Capture Professionals



- 2 Download
- 3 Installation
- 8 Fast handling
- 10 Launch Looks for
- 14 Management of files
- 23 Compare and Separates
- 25 Secondary files
- 27 Utilities
- 32 Configuration Internet Explorer

À Présentation :



The Capture of professionals Ditel allows you to capture addresses automatically from the Internet free directory PagesD'Or Belgium by defining your criteria.

The resulting file in Excel format is used by all mail software.

Indicate the country chosen in the zone notice of your order.

Attention: Our software evolves, sometimes making newer versions incompatible with former versions.

Before downloading the latest versions from our website, please follow these instructions:

Procedure (case n°1)

If you have never installed Ditel on your computer:

- Go to the products section of our website
- select the desired product in single station version (click on "read the rest") and download the trial version (which is a full unregistered version) and click on "execute".
- choose standard installation
- After the installation, launch Ditel using the icon located on your desktop, and enter the access codes provided on your maintenance sheet.

Procedure (case n°2)

If Ditel_BE_CaptureProis already installed on your computer:

- Click on the "start" menu
- select "Control Panel" and choose the "add/remove program" option. Once the list has been created, delete Ditel Prospect.
- once you have deleted the Ditel software, please go to the "products" section of our website.
- select the desired product in single station version (click on read the rest) and download the trial version, (which is a full unregistered version) and then click on "execute"
- choose standard installation
- Finally, after the installation has been completed, you can launch Ditel using the icon located on your desktop, and enter the access codes provided on your maintenance sheet.

Procedure (case n°3)

If a former version of Ditel_BE_CapturePro is installed on your computer (i.e. if you get a Windev error when you launch Ditel Prospect):

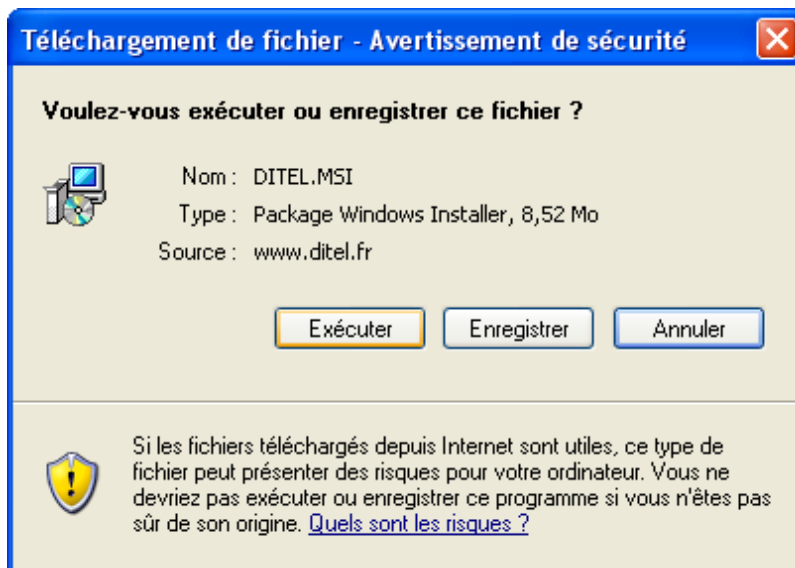
Click on the "start" menu of your computer and select "control panel". Choose the "add/remove program" option. Once the list has been created, delete Ditel Prospect.

Then open the c: disc of your computer and select "Program files". In the "program files" directory select "Ditel_BE_CapturePro", right-click on your mouse and choose "delete". Once the program has been deleted, please go to the "products" section of our website and select the desired product. click on "read the rest" and download the trial version (which is a full unregistered version) and click on "execute". Choose the standard installation.

Finally, once the installation has been completed, launch Ditel_BE_CapturePro using the icon located on your desktop, and enter the access codes provided on your registration sheet.

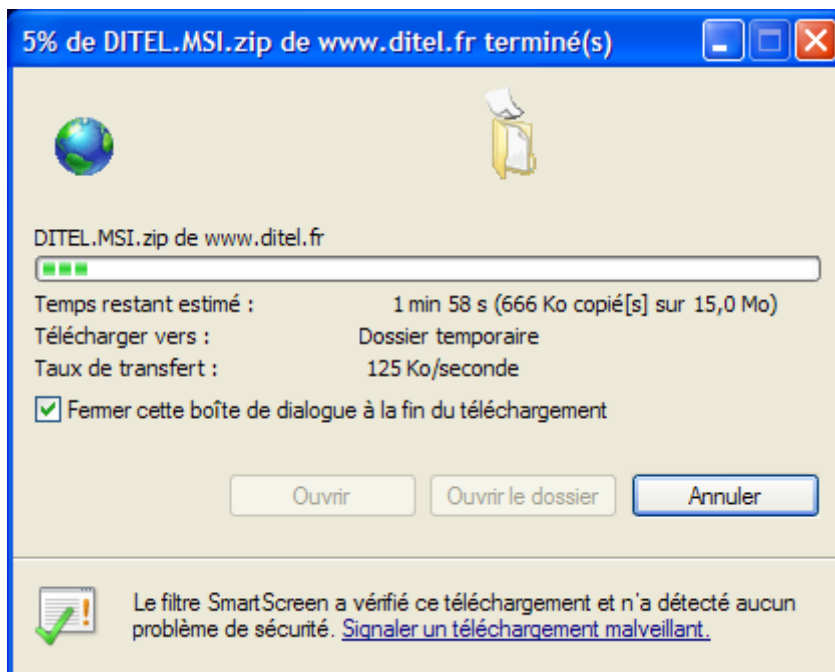
Then, download Ditel and when the "download file" window appears, choose "execute". In doing so, the installation is done directly from the copy on our server, and no MSI installation file is left on your computer. However, certain systems require (for security reasons) that the installation be done from a file which is present on your computer. In this case you need to choose the option "save" (possibly to your desktop) and launch the installation of the MSI from the local copy.

Ask your network administrator to give you the authorization to install programs if they blocked this function.

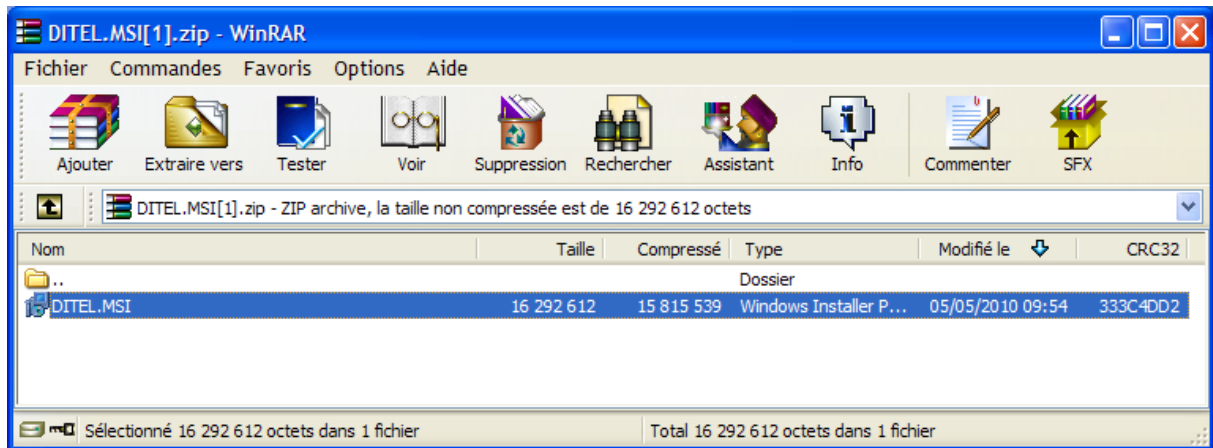


Click on "Ouvrir" or "Execute"

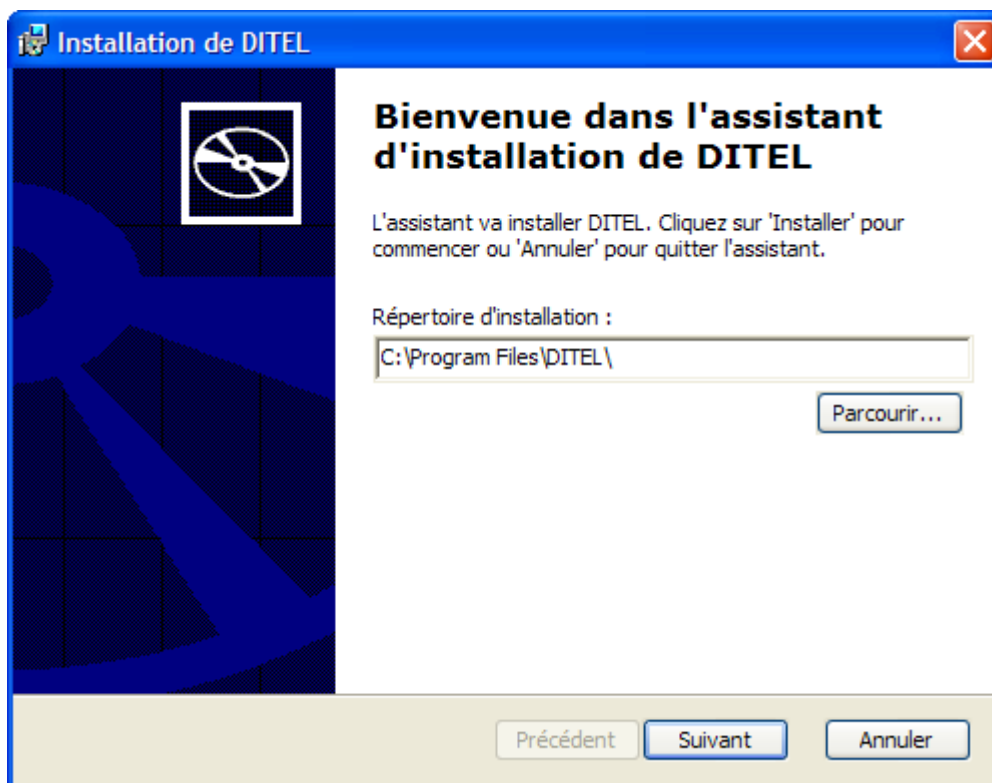
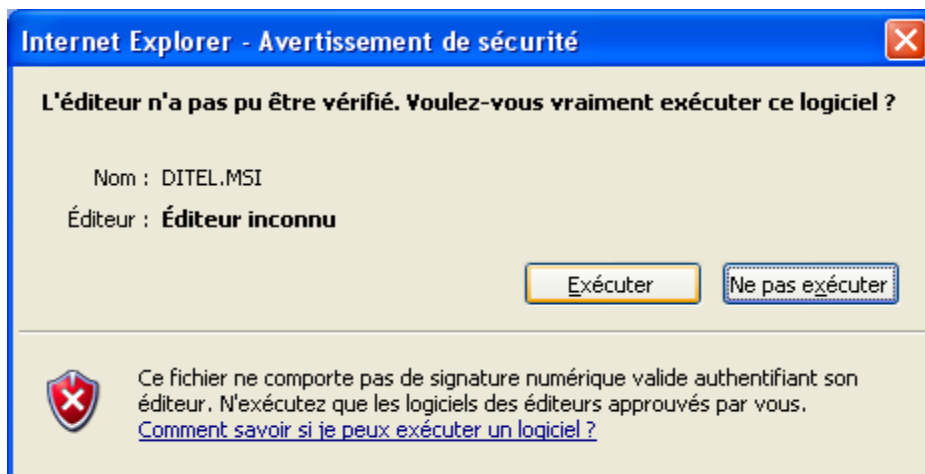
The software is downloaded to your computer. It can take one to six minutes depending on the speed of your internet connection.



If at the end of the download the following window appears, click on "DITEL.MSI" to launch the installation.



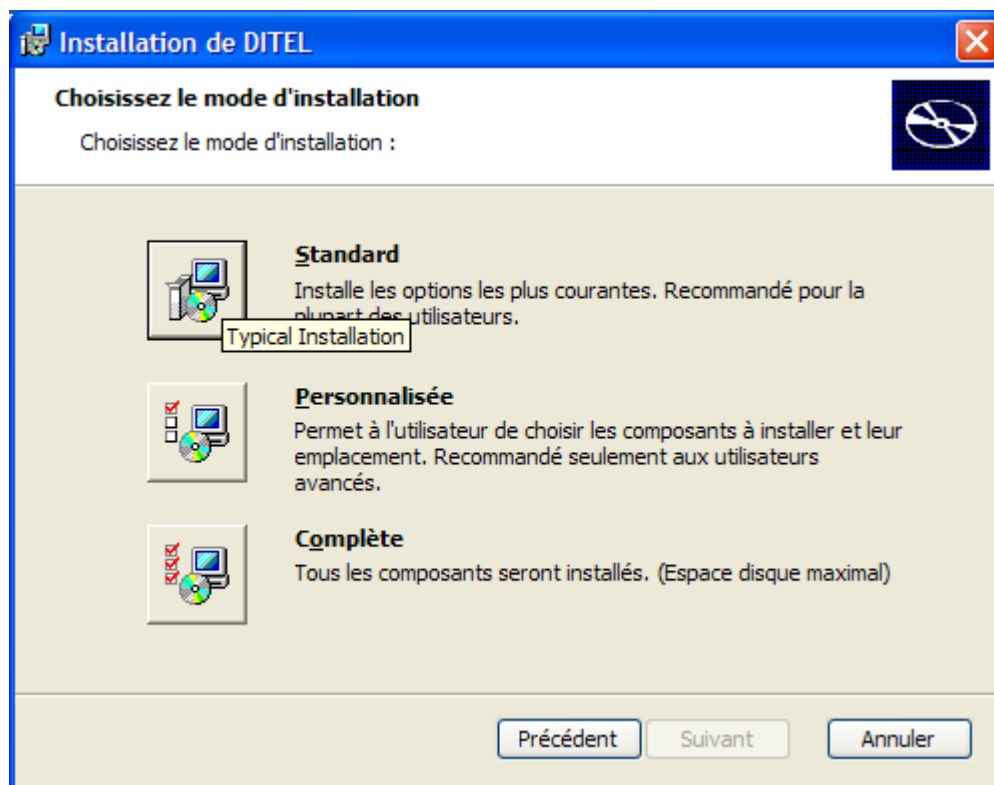
If at the end of the download the following window appears, click on "execute" to launch the installation.

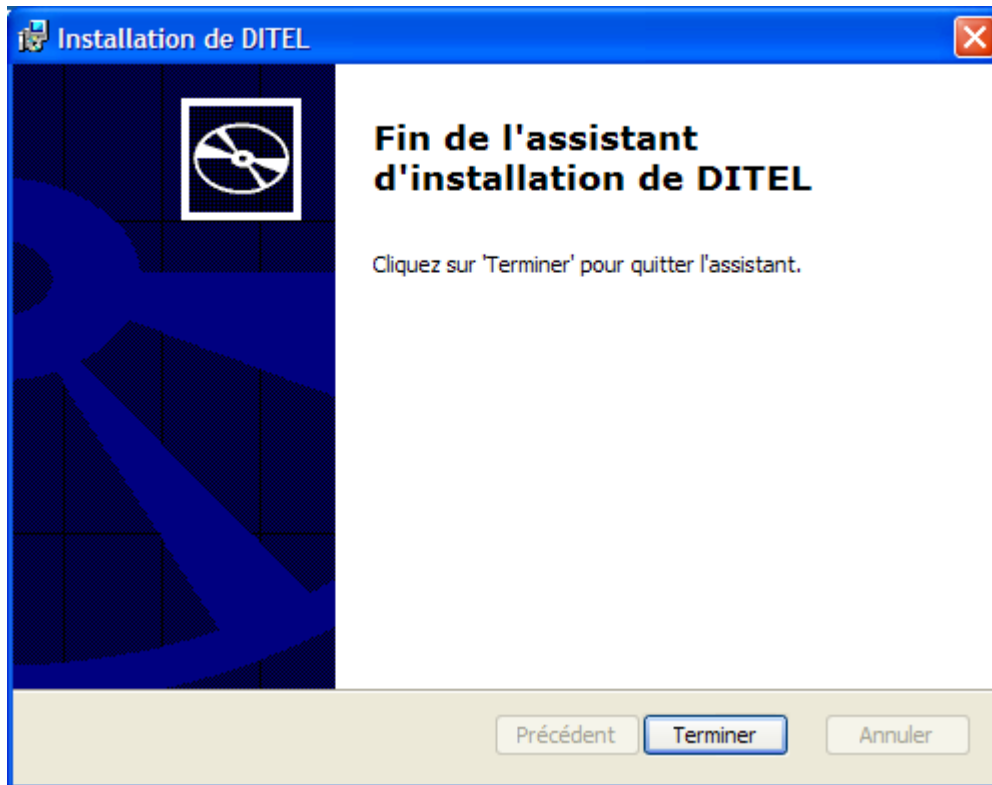


Attention under Vista and Windows 7 it's better to install the software on the root of the disk C: by deleting \Program Files

Click "Suivant"

Choose " standard Installation "





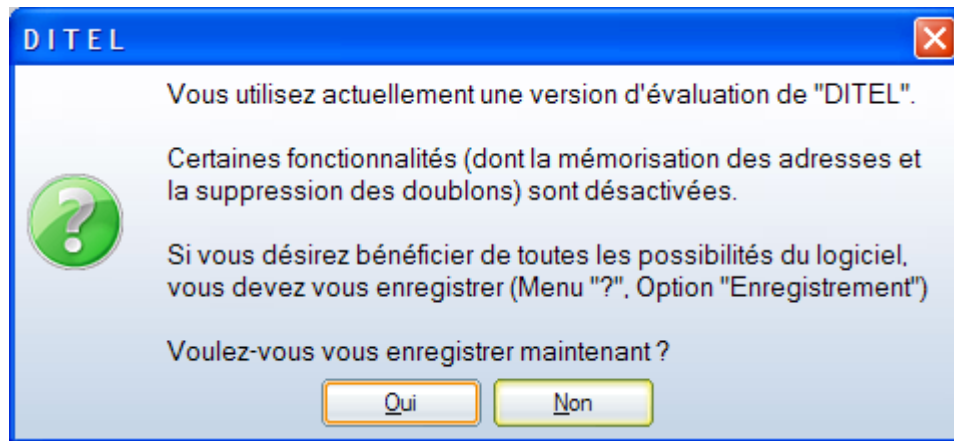
Finally click on "finish"

Once you have downloaded and installed the software, you can launch Ditel with the icon located on your desktop.



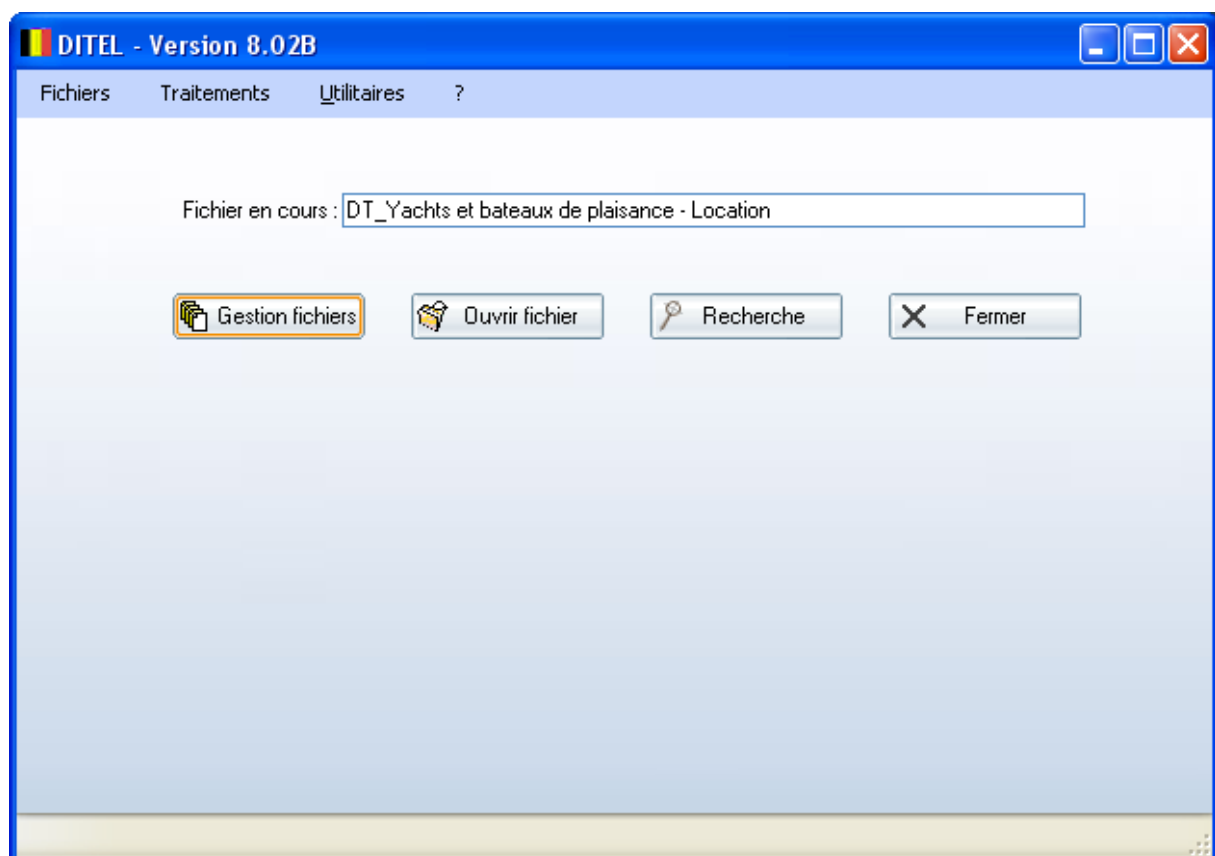
DITEL_Capture_Pro.Ink

Main Screen



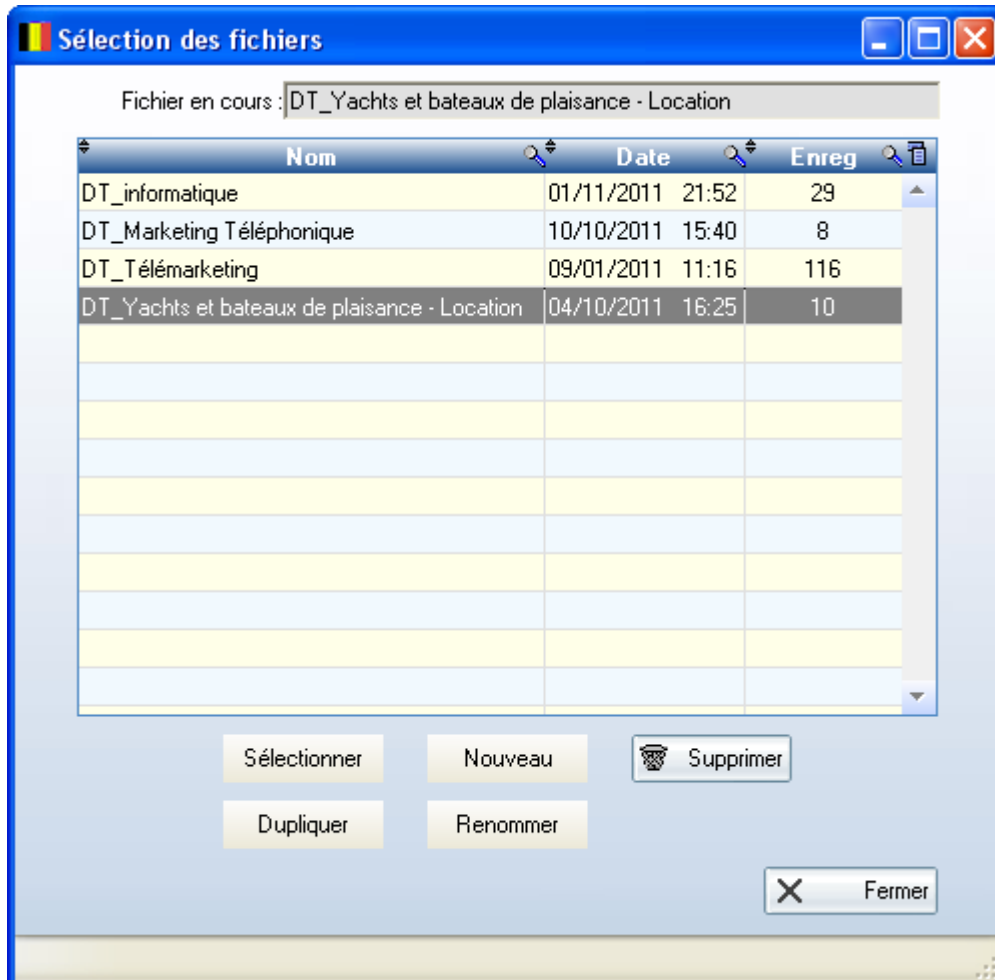
[Answer Not to use the software in mode evaluation](#)
[Yes when you received by e-mail the license\(Bachelor's degree\) of activation after purchase of the software and seize your codes](#)

The "File management" and "open file" buttons allow you to manage the files you have created. The "Email" button allows you to send customized emails massively. "Quit" closes the application.



1-Current file: it is the name of the file you are currently working on, that is to say the file you visualize by clicking on "Open files" and the one where addresses will be saved.

2-File management: you can create, select and delete a file.



Select the file you wish to work on; in our example "telemarketing"/"marketing téléphonique" must be selected. If this file does not exist, it is possible to create it by clicking on "New", entering the name of the file and pressing "enter". The name of the selected file appears on the main screen, in the "Current file" zone.

Adresses du fichier DT_Marketing Téléphonique

Nom	Prénom	Adresse	Code postal	Ville	Téléphone
SNT Belgium NV		Lamorinièrestraat, 31-37	2018	ANTWERPEN	03 285 48
Tele Center Antwerpen BVBA (A		Sint-Jacobsmarkt 97 4	2000	ANTWERPEN	03 213 25
All Call Services NV (Antwerpen)		Kipdorpevest 40-42	2000	ANTWERPEN	03 202 84
Freelance-Telemarketing.be (An		Italiëlei 46	2000	ANTWERPEN	03 475 00
Martine Constant et Partners (Ar		Sint-Jacobsmarkt 97	2000	ANTWERPEN	03 236 73
MCP Consulting Group (Antwerp		Sint-Jacobsmarkt 97	2000	ANTWERPEN	03 236 73
Cumanco BVBA (Antwerpen)		Anneessensstraat 1-3	2018	ANTWERPEN	03 609 53
Go Excellent BVBA (Antwerpen)		Beukenlaan 12	2020	ANTWERPEN	03 825 65

Identifiant : 11101016391889

Nom / prénom : SNT Belgium NV

Prénom :

Adresse : Lamorinièrestraat, 31-37

Code postal : 2018

Index org. :

Ville : ANTWERPEN

Téléphone : 03 285 48 48

Télécopie : 03 285 48 49

Portable :

Adresse mél : info@sntbelgium.be

Site : www.sntbelgium.be

Rubrique : Marketing téléphonique

Date de récupération : 10/10/2011

Heure de récupération :

Launch of the Search:

Before launching the capture, you have to define your criteria of search(research).

Buttons " Management files " and " to Open file " have the same features as those of the main page.

Type of search:

It is possible to specify a single column (option " 1 column(section) activity "), either to select, from the file of the columns(sections), or all the columns(sections) which interest you (option 2 " File of the columns(sections) ").

A - Search on 1 column

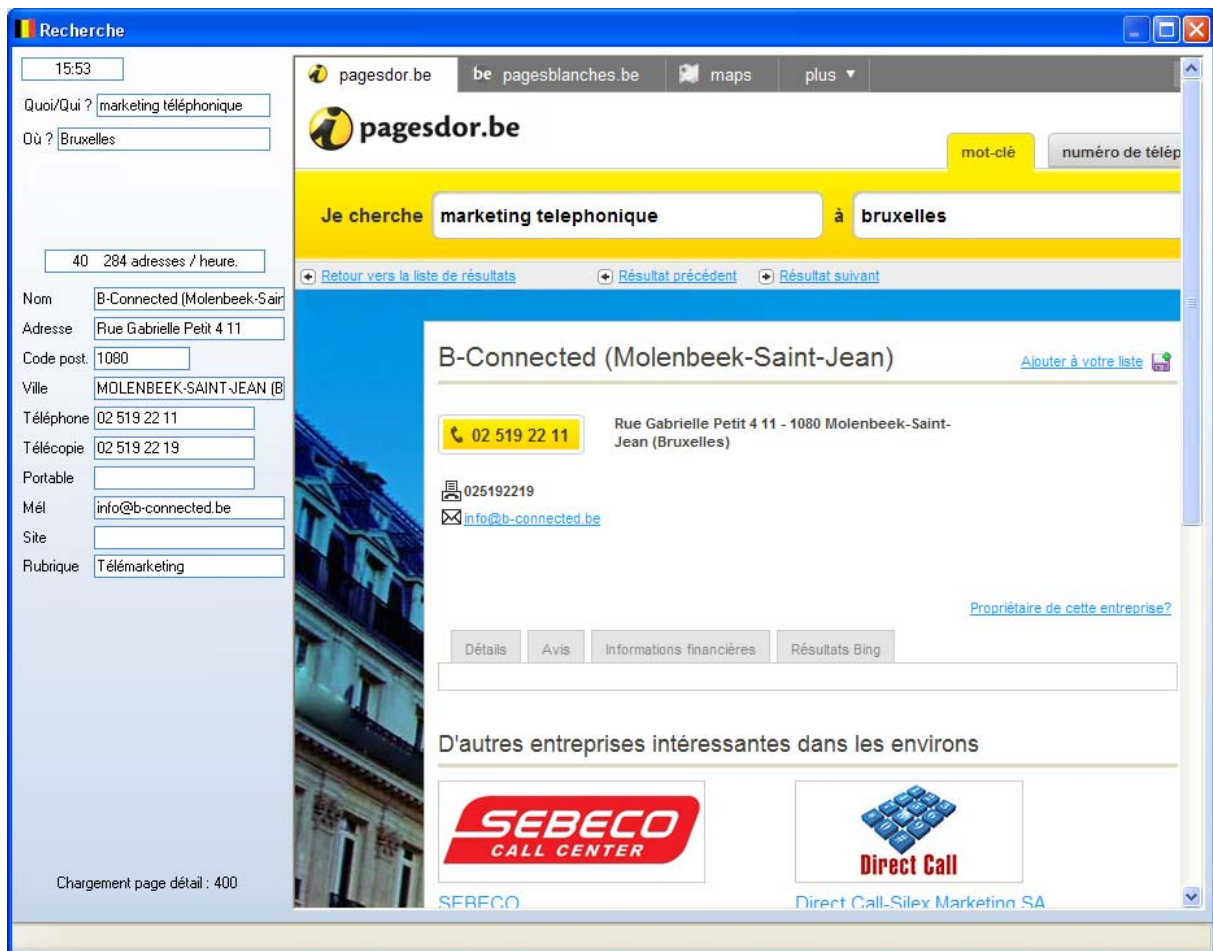
This type of search is useful when to make you a capture in big cities such as Paris, Lyon, Marseille, etc., because our software accepts no more than 1200 addresses for the same column in the same city. It is then necessary to specify a district and then to mark again " File of the columns(sections) " then to throw(launch) the search.

- Search by multiple columns:

- Press on the button "Columns", the global list of the columns(sections) appears.
- It is necessary to mark the columns which is going to concern the search.
- The addition or the deletion of one coach remits in the mouse.
- To refine the display of the columns, use the zone " Search on keyword ": only the columns containing the specified words display on the screen.
- The support on the button " to select Everything " allows to mark all the columns(sections) while " Any désélectionner " reset the selection.
- Buttons "Supprimer" and "to Add" serve to modify the file.
- When you press on "Fermer", you return to the window of search on which the list of the selected columns(sections) updates.

- To select one or several department (s) wished (s), mark compartments situated in the right part of the list or click the map of France.

Click "Recherche" to start the capture



Ditel can record between 1500 and 3000 addresses in hour according to the fastness of your Internet access and specific gravity information's contained in sought-after rubrics.

A « right click » extended on the window of capture of enc allows to stop the capture when addresses march in the screen to update billing in case of stopping of the capture.

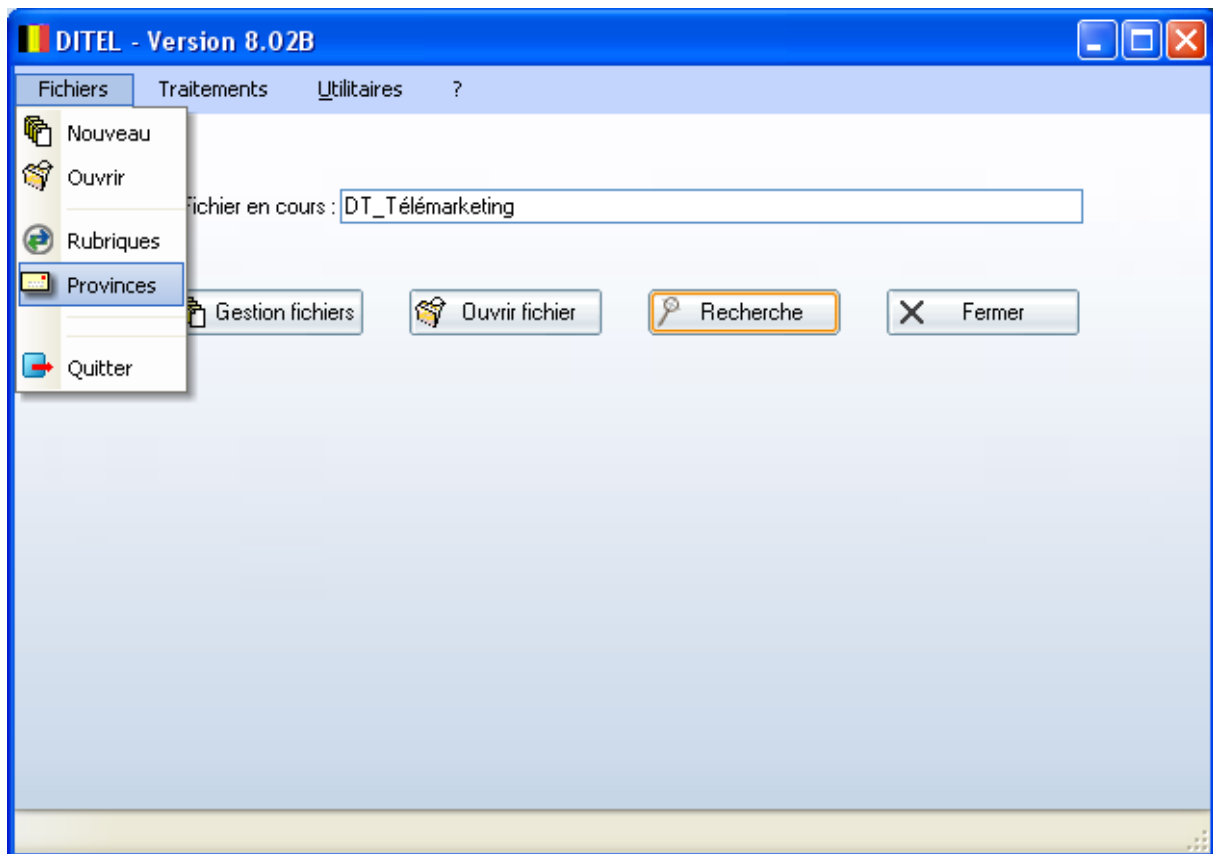
The icon « to Show the office » to the right of the menu to "start « (toolbar " quick Launching ") allows to reduce the window of capture

Our software is dependent on Internet service, it can happen that it jams (in reason, for instance, of a break of the flux of information of the waiters), that is the bar of load does not advance any more. To restart the capture, you only have to perform a right click with your mouse and to choose option "Actualiser " in the contextual menu, what, in general, restarts research.

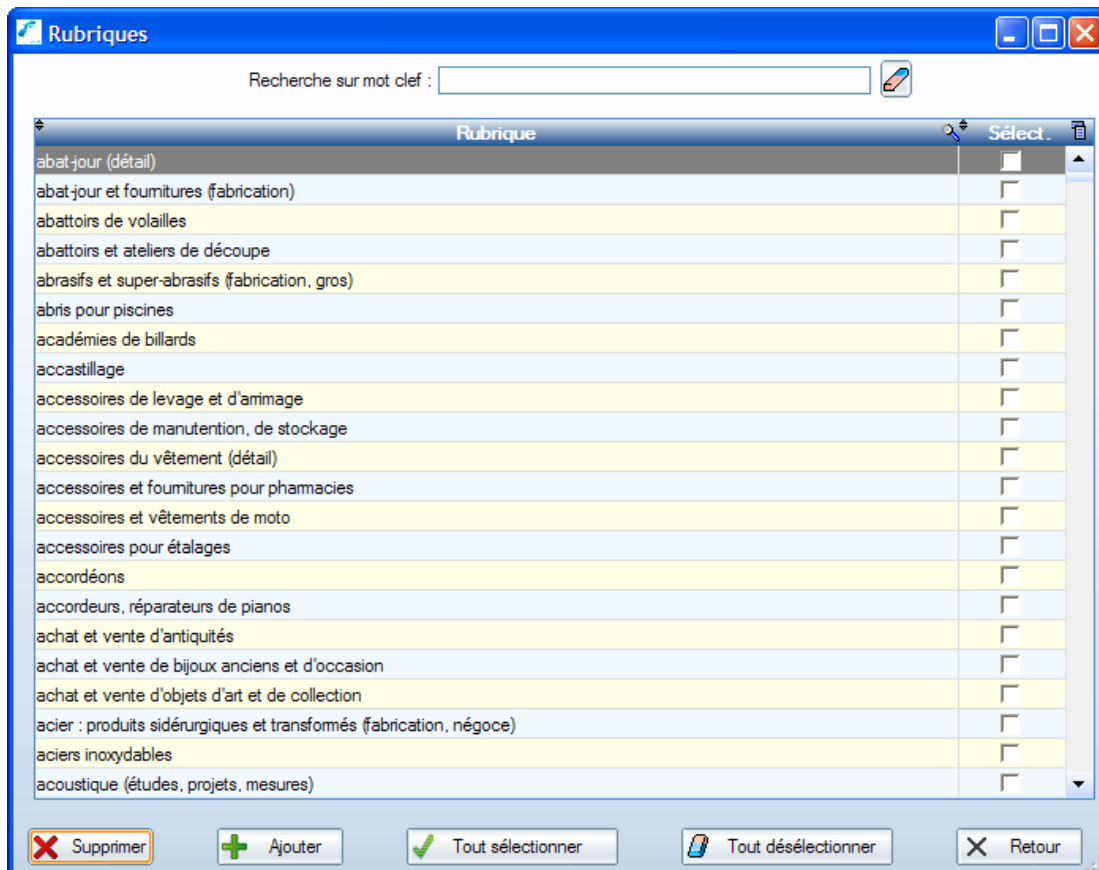
If this manipulation does not work, it is necessary to have recourse to the administrator of the stains of Windows by pressing at the same time on the keys of your keyboard Ctrl. Alt. and Suppr. Then choose the thumb-index process then click

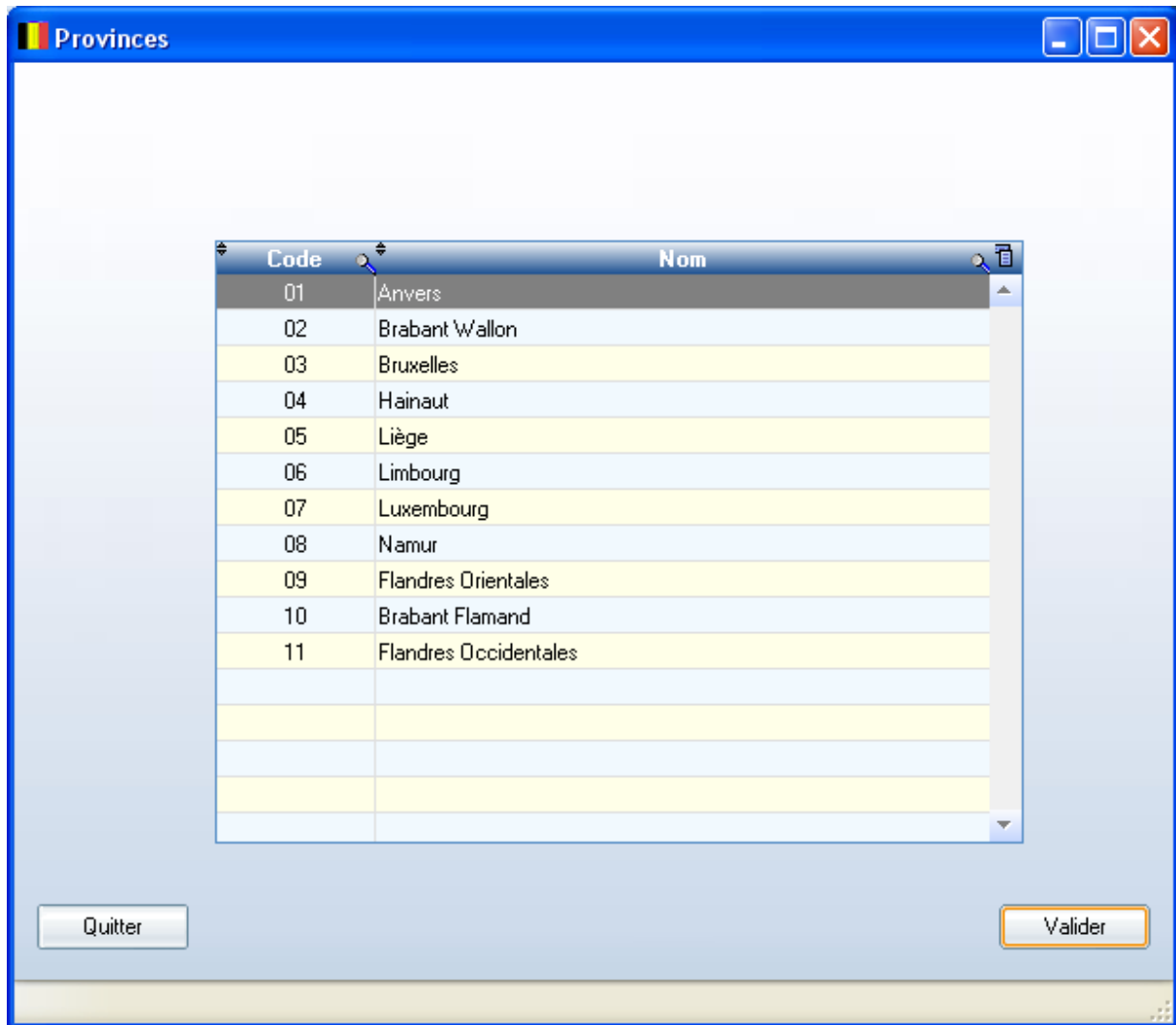
on Ditel and finally End process. Ditel program is then stopped, the last captured information is even recorded if rubric is not finished. You can then start again DITEL Capture professionals and take back your research.

Fichiers Annexes



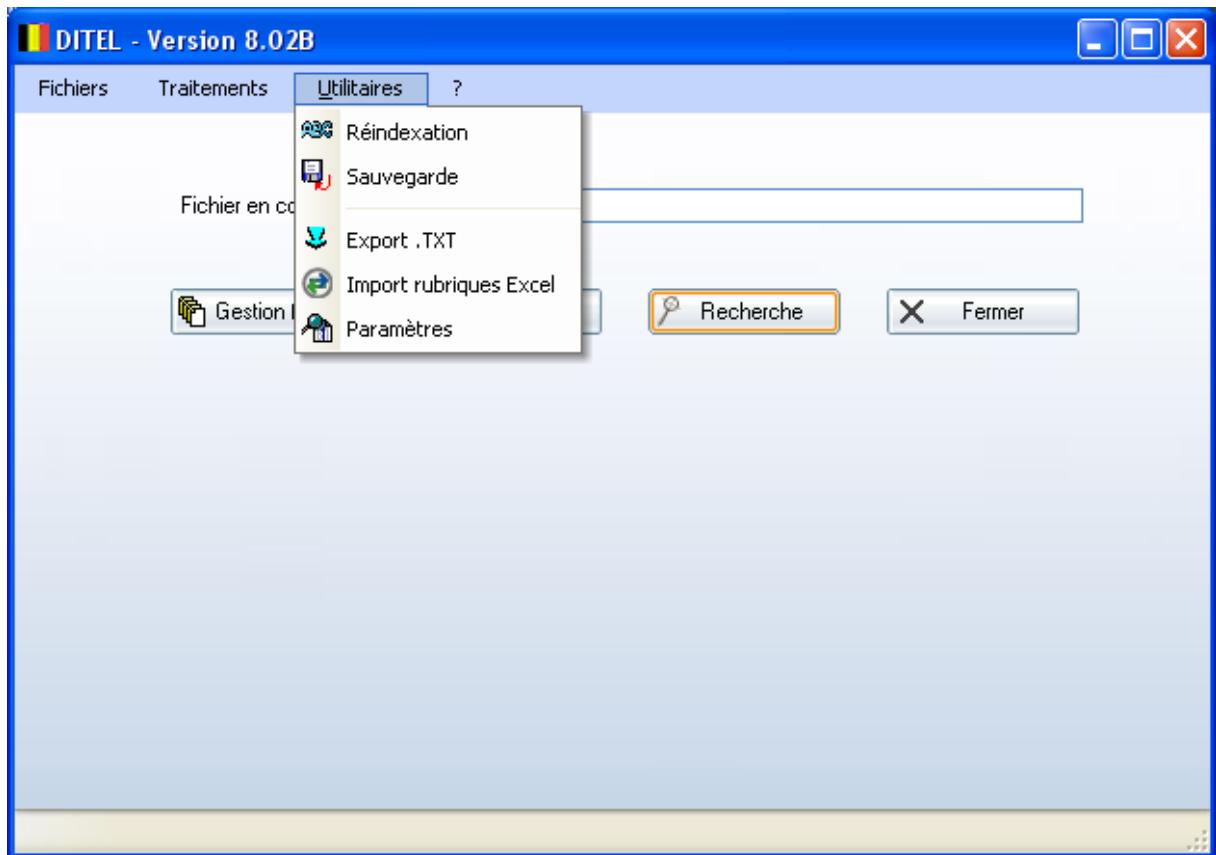
The secondary files are the ones columns of the directory and the zip codes which you can adapt to your own custom.





The menu "Utilities"

For a more complete use of files, the orders are in the menu "Utilities"; the options of this menu address warned users.



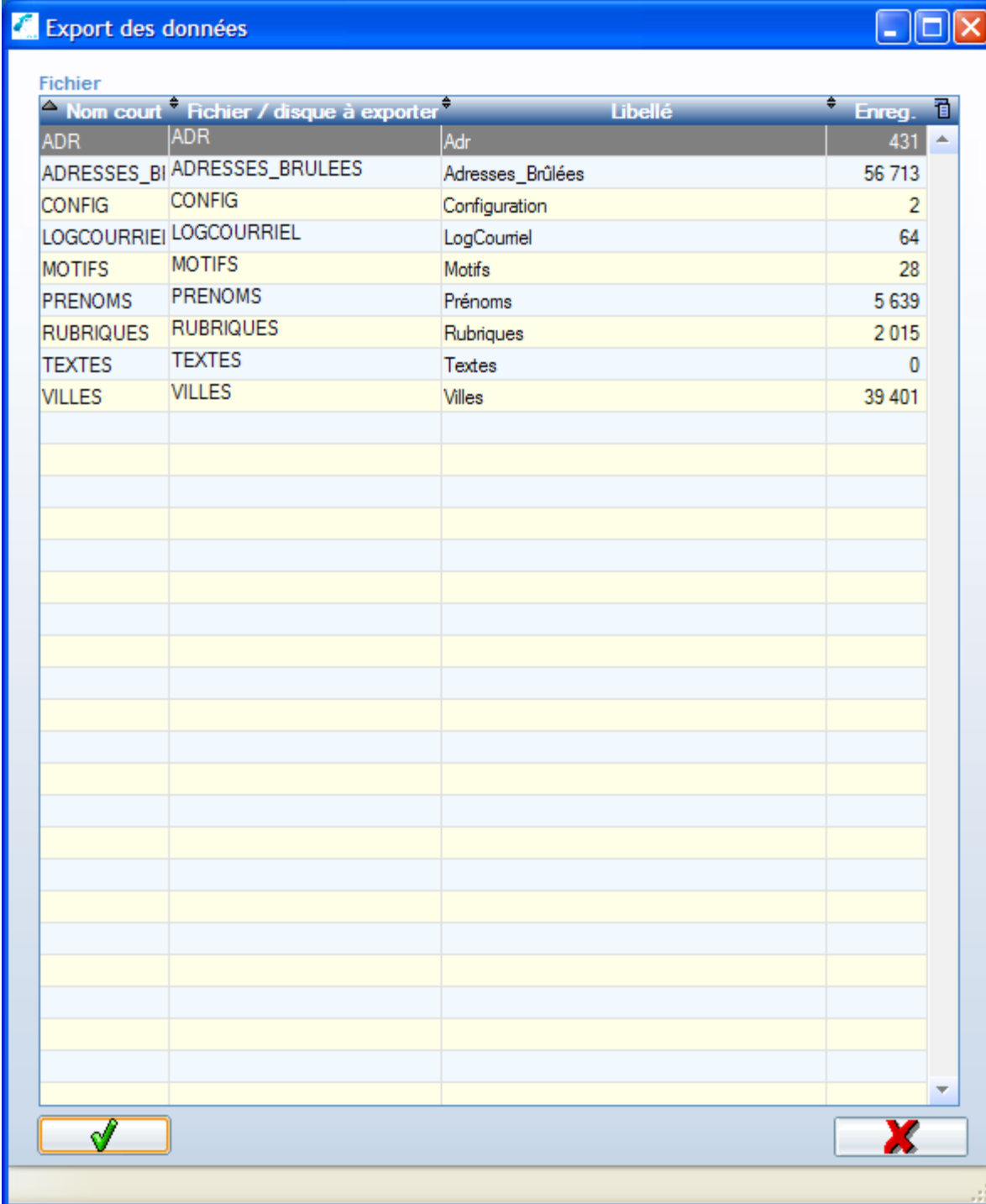
You can export for example the addresses in "ASCII" size, if you do not wish to use the size Excel.

Ré to index your files, to protect your files, to make exports text towards big systems,

Import your own Excel file of the columns which you use mostly (the Excel file of all the sections is in the directory C:\Program files\DITEL \

Export of the data in size text:

Choose the file to export here the file of the addresses of the telemarketing, the fields which you wish to export and the separator of field. The .TXT file of the export is written on the root of the disk C:



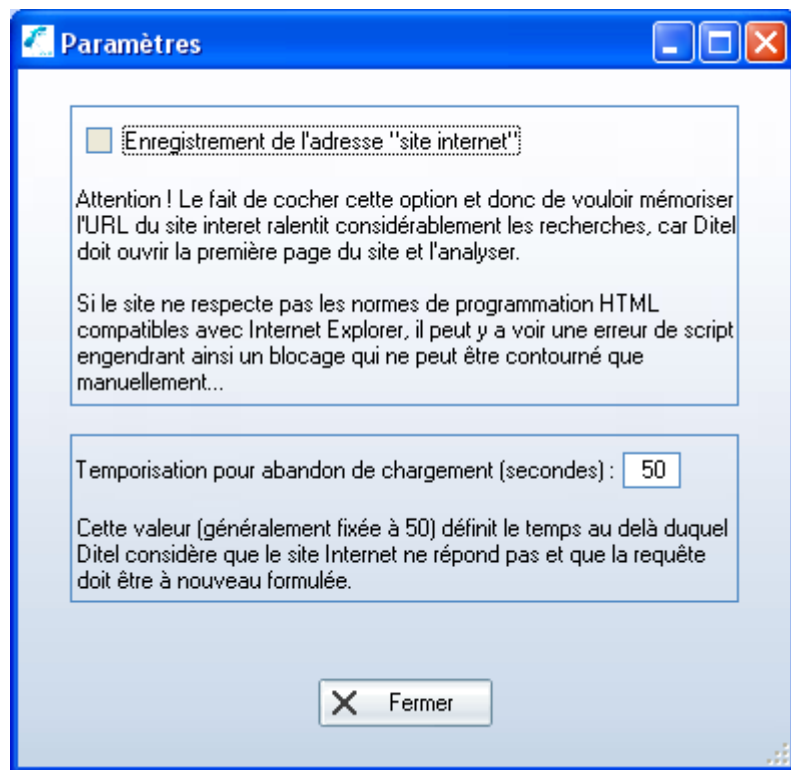
The screenshot shows a window titled "Export des données" with a table of data files. The table has four columns: "Nom court", "Fichier / disque à exporter", "Libellé", and "Enreg.". The data is as follows:

Nom court	Fichier / disque à exporter	Libellé	Enreg.
ADR	ADR	Adr	431
ADRESSES_BI	ADRESSES_BRULEES	Adresses_Brûlées	56 713
CONFIG	CONFIG	Configuration	2
LOGCOURRIEL	LOGCOURRIEL	LogCourriel	64
MOTIFS	MOTIFS	Motifs	28
PRENOMS	PRENOMS	Prénoms	5 639
RUBRIQUES	RUBRIQUES	Rubriques	2 015
TEXTES	TEXTES	Textes	0
VILLES	VILLES	Villes	39 401

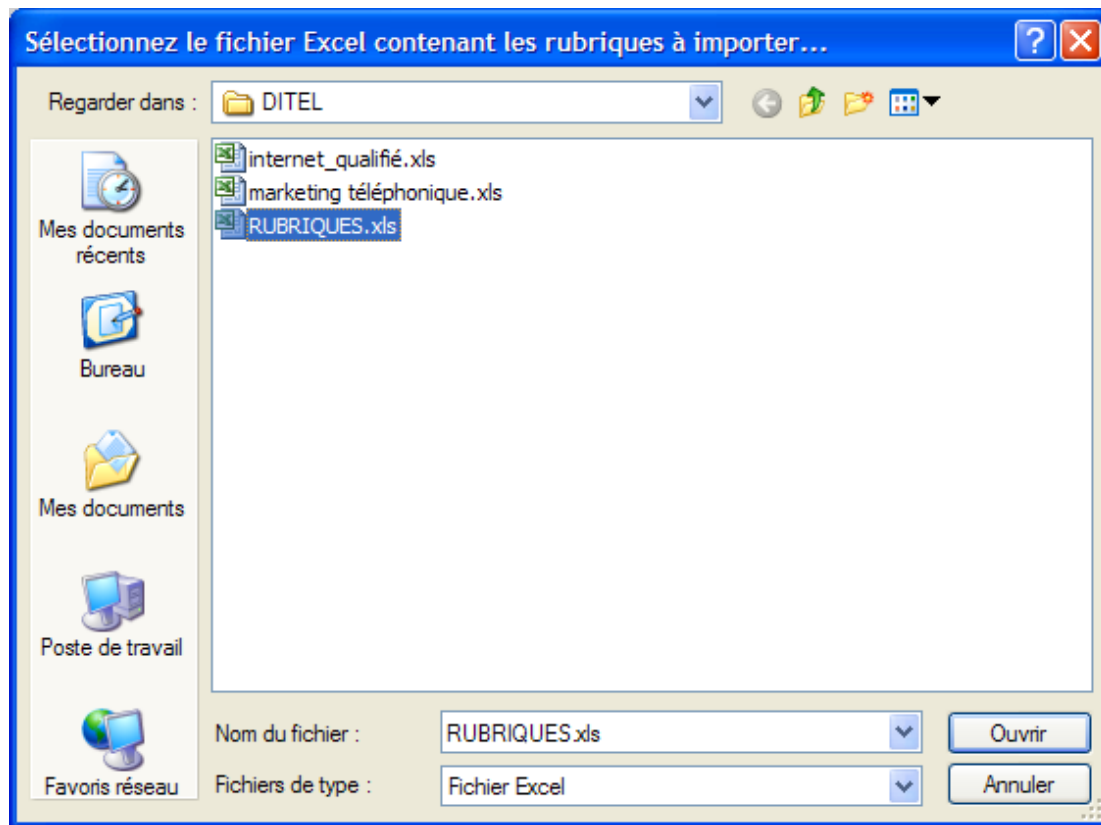
At the bottom of the window, there are two buttons: a green checkmark button on the left and a red X button on the right.

RECORDING OF THE URL OF the SITE

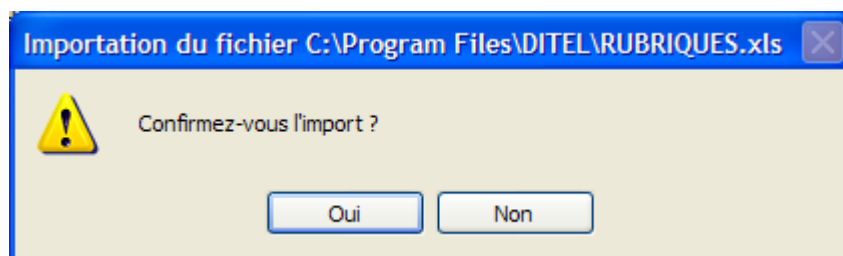
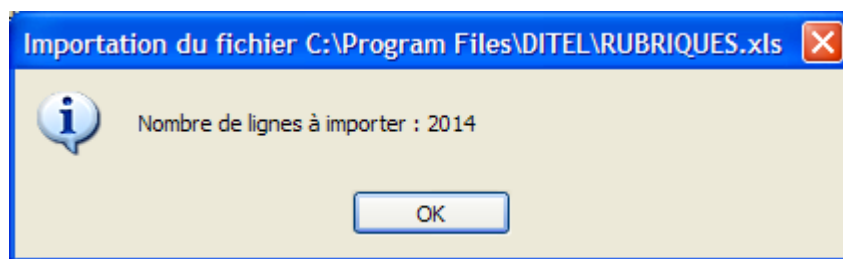
You can mark the compartment recording web site



Import of a file of the sections in size Excel:



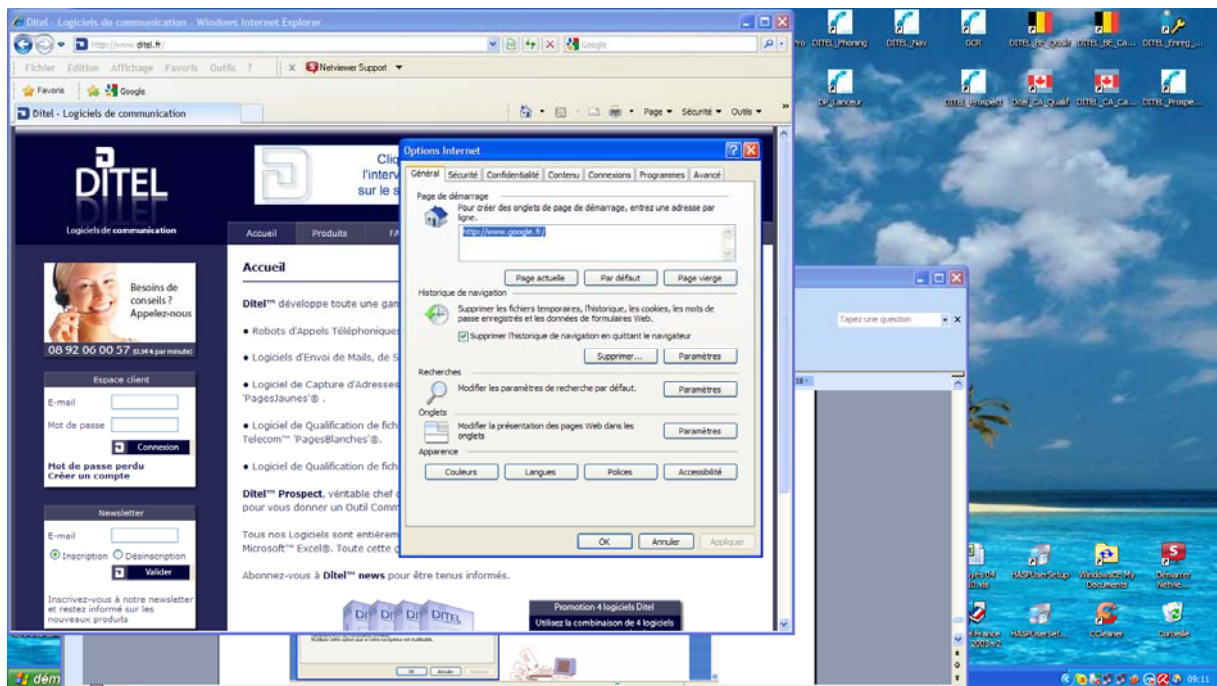
Import your own Excel file of the sections which you use mostly (the Excel file of all the sections is in the directory C:\Program files\DITEL \



Attention if you import your own columns you beforehand have to erase the columns of Ditel

The "?" Menu prospace about the owner of the license and presents information has PDF version of to use manual have well have the Copyright of the software.

In the new window so opened click the advanced tab ...



In the tab Navigation you have to mark 2 compartments:

Deactivate the debugging of the scripts the other applications)

Deactivate the debugging of the scripts (Internet Explorer)

Watch to have always on your computer the last version of Internet Explorer

